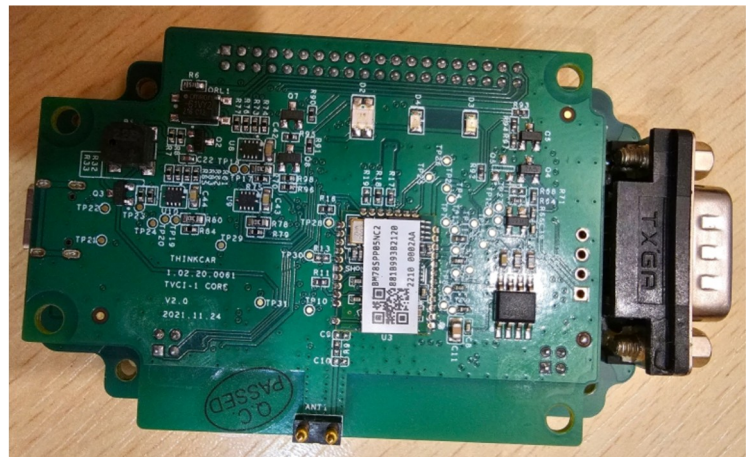




We remove the rubber, unscrew 4 screws

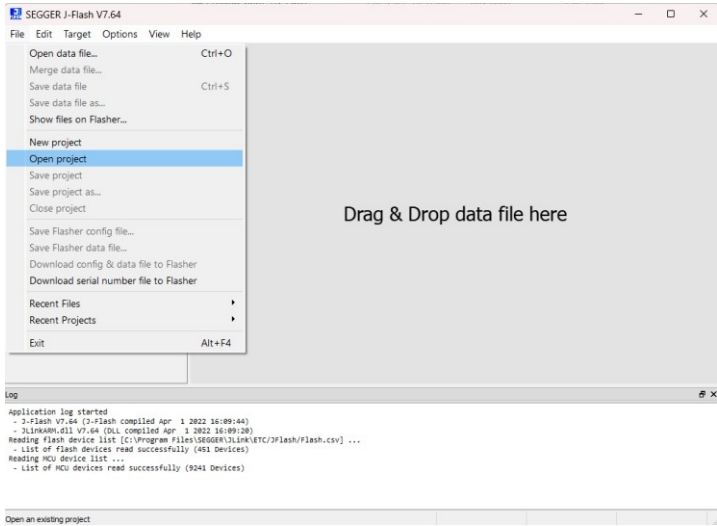


and again unscrew 4 screws

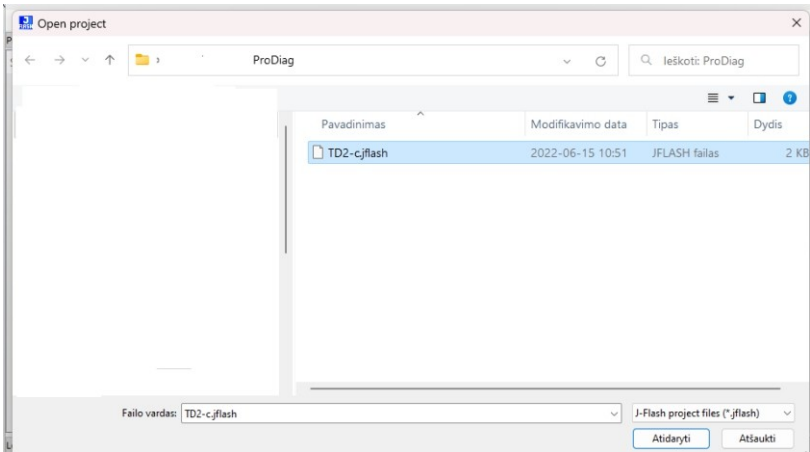


Connect to Jlink V9 or newer version

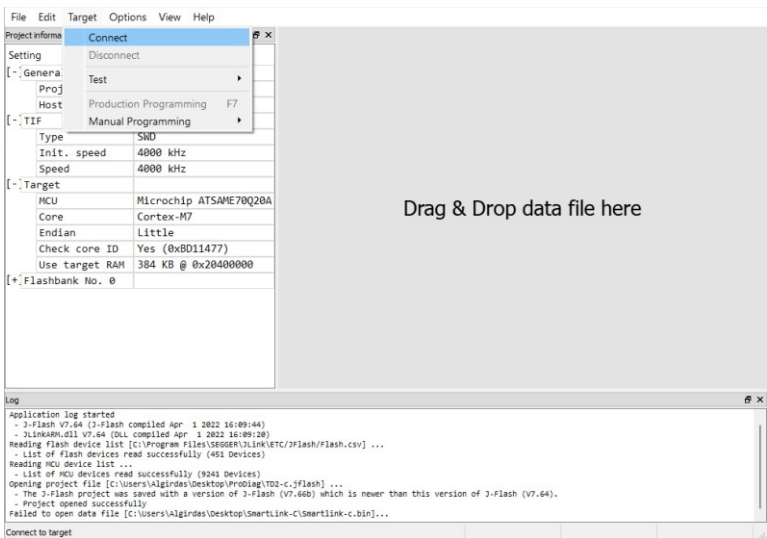
Start program J-Flash and push Open project



in ProDiag folder select TD2-c.jflash

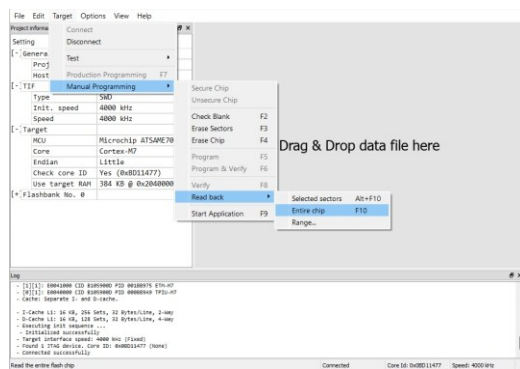


in program select Target - Connect

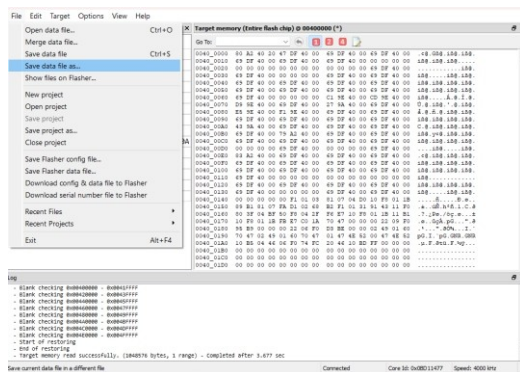


after Jlink connect to adapter , read your chip;

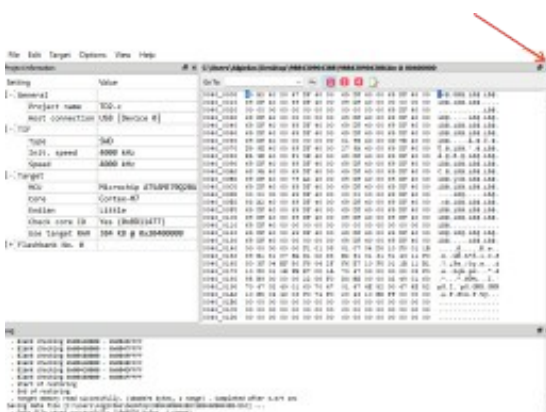
Target - Manual Programming - Read back - Entire chip



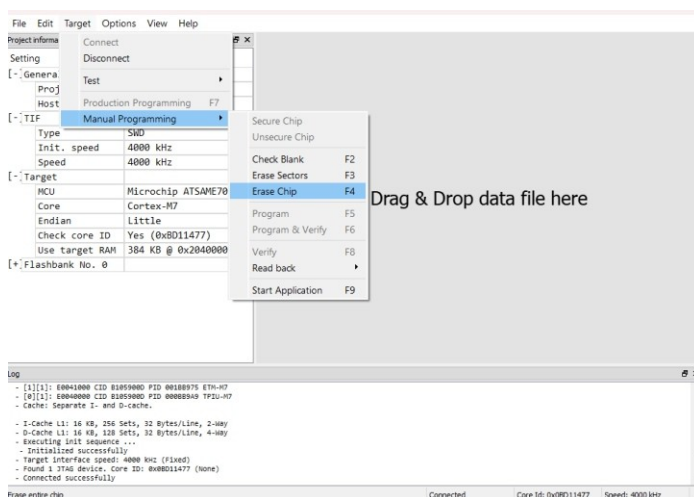
after read your chip, please save it



after save , press x

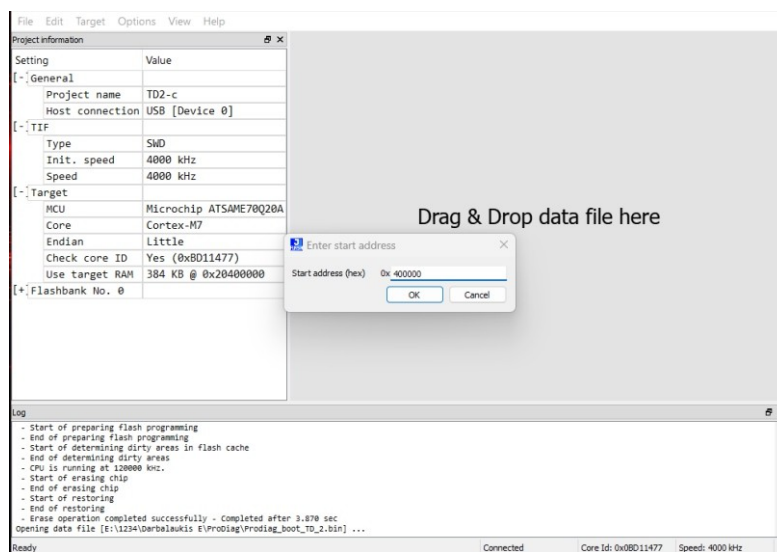
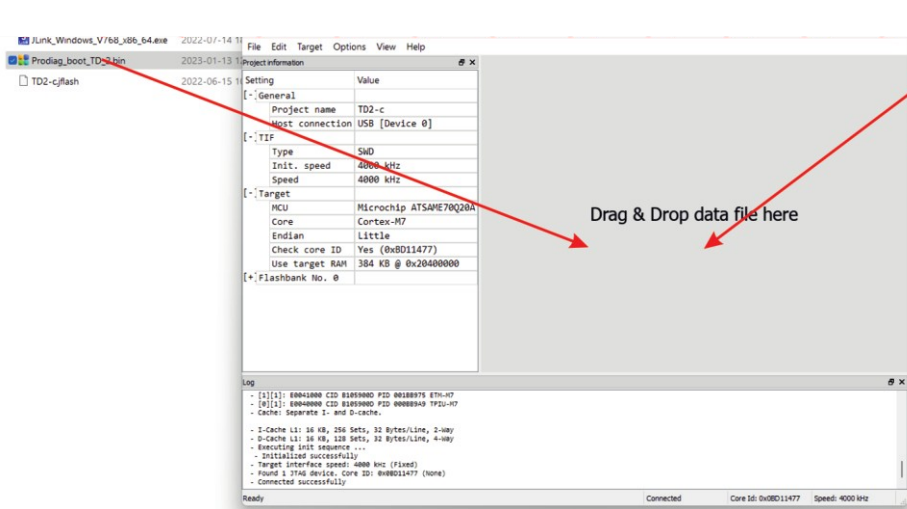


Now erase your chip: Go to Target - Manual Programming - Erase chip



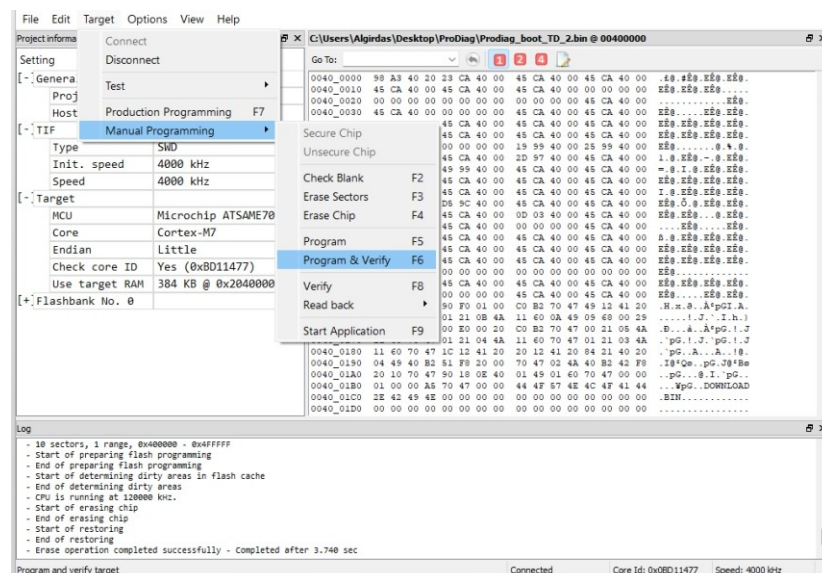
From the Prodiag folder,

drag the file Prodiag_boot_TD_2.bin here



OK

Now go to : Target - Manual Programming - Program & Verify



If everything is fine, you will see this message

